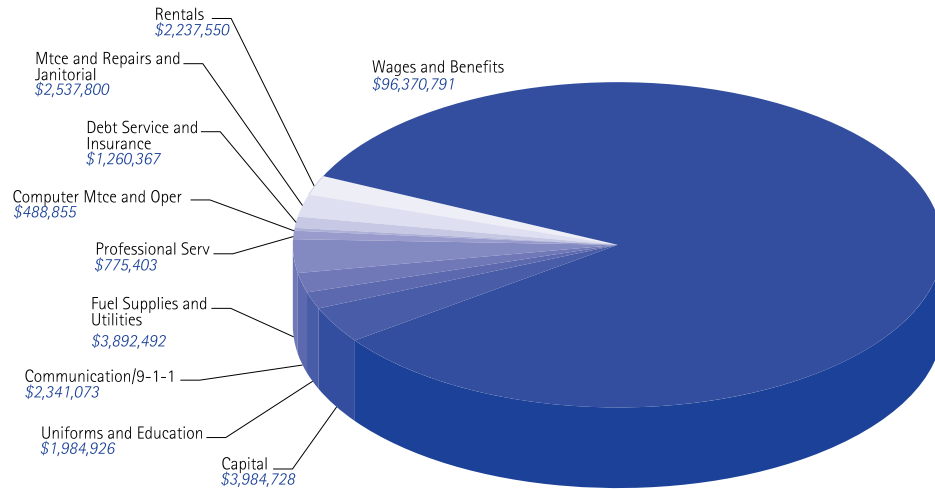
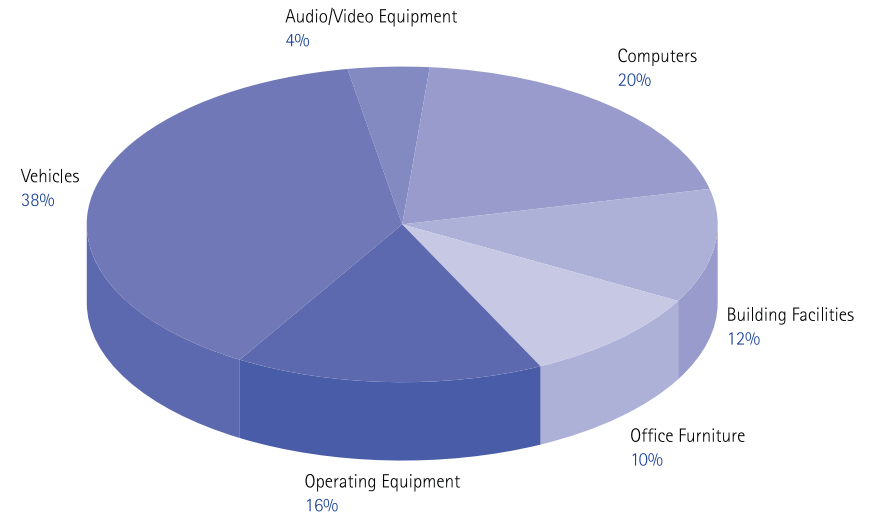




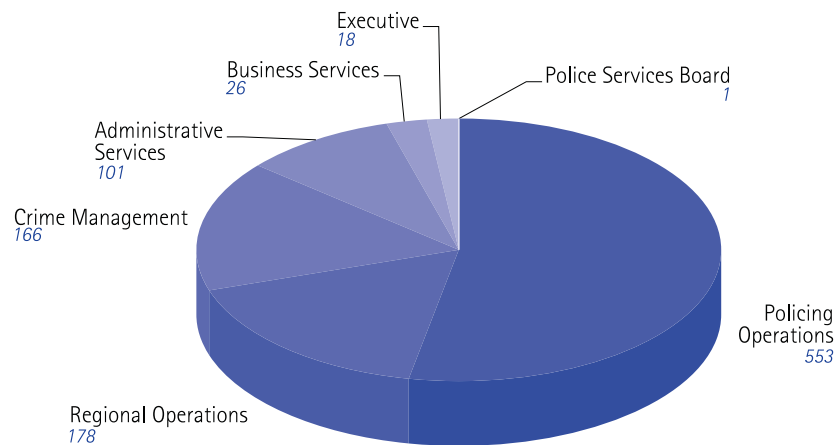
## Actual Spending by Major Expense |



## Capital Distribution by Major Category |



## Distribution of Personnel Resources |



The Capital purchases illustrate the distribution of major capital items according to the nature of the items.

The Financial Services Unit assists in the budget process by working with all units to collect budget information that they then review and consolidate for the entire service. The consolidated budgets undergo extensive review by the Executive Leadership Group and the Police Services Board and once approved are submitted to the Region of Durham for further review by the Finance and Administration Committee and Regional Council.

Financial Services also provides a focal point for the purchase and payment processes for goods and services approved by budget. Regular review of financial results, reporting to the Police Services Board on financial matters, and a forecast of costs and expenditures are provided by the Financial Services Unit.



Every year, the Police Services Board recognizes long-serving members for their dedication and commitment to public safety. A total of 29 employees were recognized on Sept. 9th at a gala ceremony at Deer Creek Golf and Banquet Facility in Ajax:

### **3 0   Y e a r   U n i f o r m   R e c i p i e n t s**

Staff Sergeant Reinhardt Albrecht  
Detective Grant Arnold  
Constable Nancy Fluke  
Inspector Charlie Green  
Detective Jacob Haze  
Sergeant William Hopkins  
Constable Bruce Kelly  
Constable Frank Knowlton  
Constable Leslie Nagy  
Inspector Dietmar Schoenrock  
Constable Jerry Trimm

### **2 0   Y e a r   U n i f o r m   R e c i p i e n t s**

Sergeant Kelly Chesson  
Detective David Elliott  
Constable Nancy George  
Detective James Houston  
Detective John Keating  
Constable Mark Michalowsky  
Constable Gaetano Paparella  
Sergeant Wallace Wilson

### **3 0   Y e a r   C i v i l i a n   R e c i p i e n t s**

Gerald Drew  
Charmaine Morrissey  
Theresa Virgin

### **2 0   Y e a r   C i v i l i a n   R e c i p i e n t s**

Annamae Bleakley  
Lana Croxford  
Paula Kelly  
Sandra Mackey  
Mary Romanenko  
John Rycroft  
Shelley Saltzman

